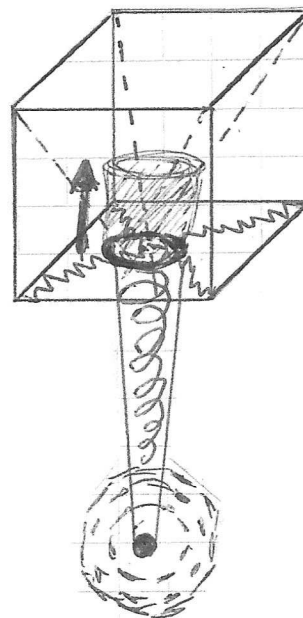


Energy Clearing Drain Technique

1. Imagine a 3 ft diameter hole that opens up in the center of the floor.
2. Imagine a 3 ft diameter drain or cylinder that connects to that hole and drops down all the way to the core of the earth, instantly.
3. Imagine drawing four lines of energy up from the 4 lowest corners of the space you are clearing and drop these into the drain.
4. Imagine drawing four lines of energy down from the 4 highest corners of the space you are clearing and drop these into the drain.
5. Imagine raising the drain up, halfway into the room
6. Imagine looking into the raised drain, seeing 8 lines of energy, spinning in a clockwise, vortex fashion-- PULLING DARK, STAGNANT, UNGROUNDED, NON-BENEFICIAL ENERGIES OUT OF THE SPACE.
7. I Call in Divine Love and Light, the Angels and Archangels of Healing and Light, and the Holy Fire Reiki to bless this space, inside and out.
8. We are grateful for this help.

Single room example



Whole house example

Imagine energy drains in every room simultaneously as you go through protocol. Focus on one room as proxy.

Or

Imagine energy drain centrally located in first floor and draw lines of energy up from lowest corners of whole house and down from highest corners of whole house as you go through protocol.

Building complex or campus

Imagine energy drains in every room of entire complex or campus, occurring simultaneously as you go through protocol. Focus on one room as proxy.